

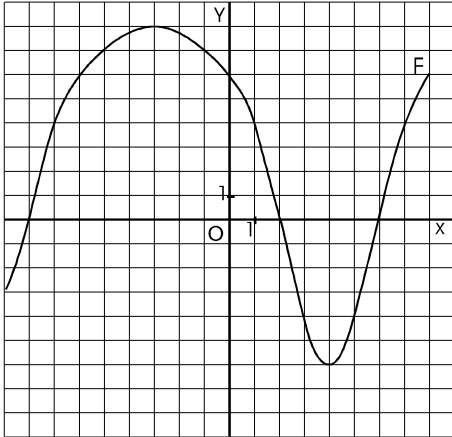
Nom :

Classe :

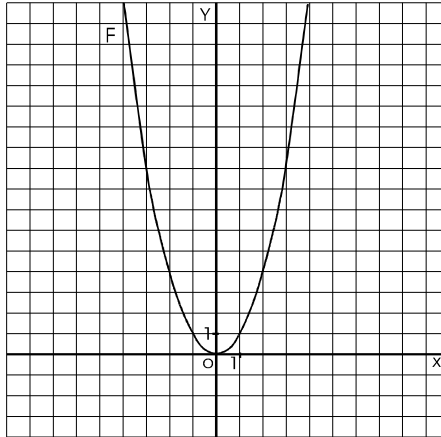
Résoudre graphiquement les équations et inéquations suivantes :

1. 1.1. $f(x) = 4$

1.2. $f(x) \leq 4$



1.3. $x^2 = -x + 2$



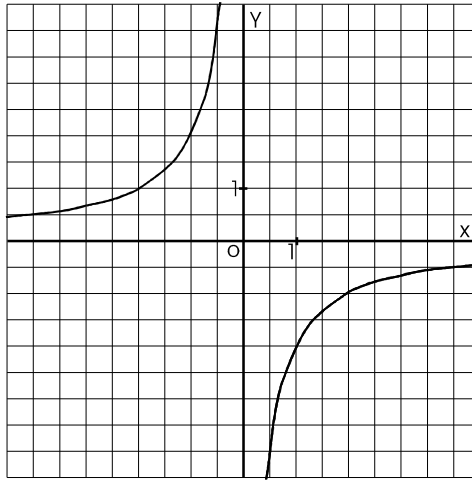
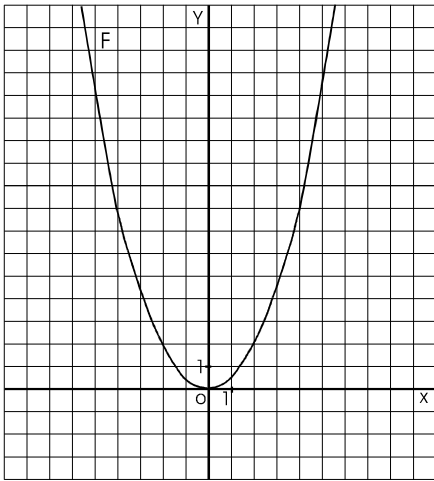
1.1.
S =

1.2.
S =

1.3.
S =

2. 2.1. $\begin{cases} y = \frac{x^2}{2} \\ y = -2x \end{cases}$

2.2. $\begin{cases} y = \frac{-2}{x} \\ y = -x - 1 \end{cases}$

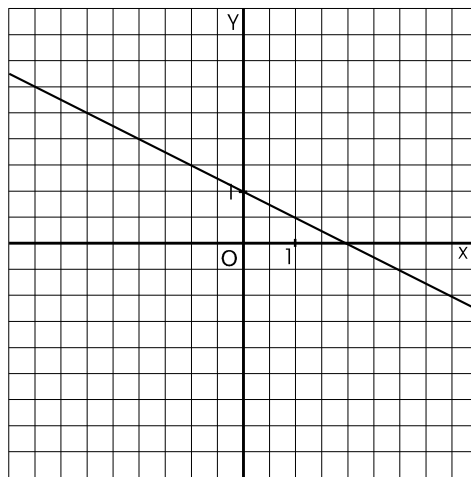
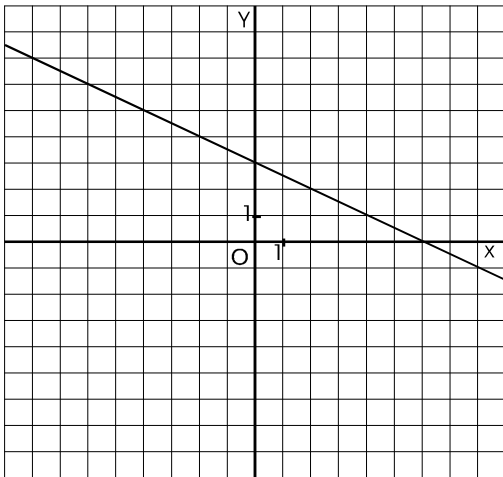


2.1.
S =

2.2.
S =

3. 3.1. $\begin{cases} y = x^2 - 5 \\ y = -\frac{x}{2} + 3 \end{cases}$

3.2. $\begin{cases} y = -\frac{1}{x} \\ y = -\frac{x}{2} + 1 \end{cases}$



3.1.
S =

3.2.
S =