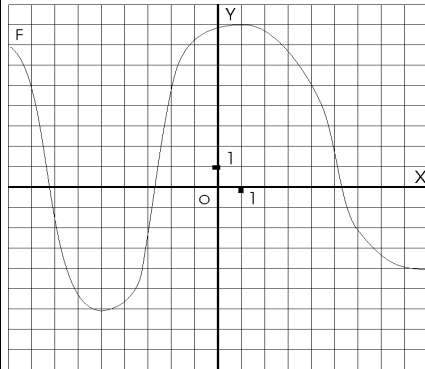


Nom :

Résolution graphique des équations, inéquations et systèmes d'équations suivants :

1.1. $f(x) = -2$

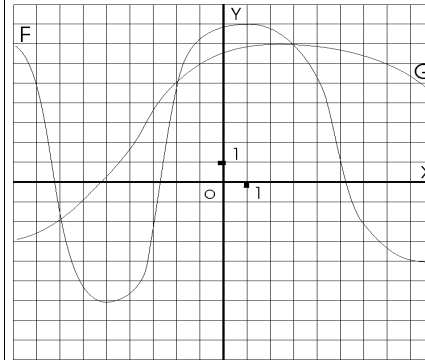
1.2. $f(x) > 5$



1.1. S =

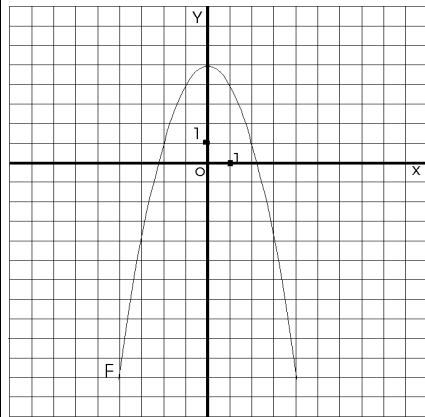
1.2. S =

2. $f(x) = g(x)$



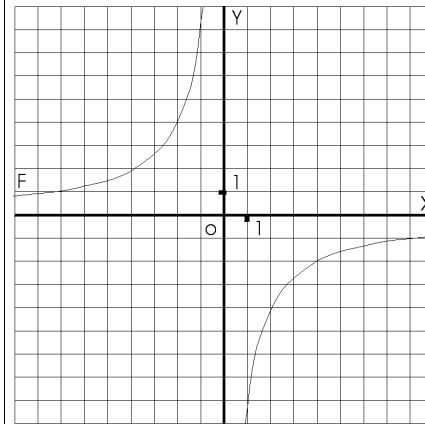
S =

3. $-x^2 + 5 = \frac{x}{2} + 3$



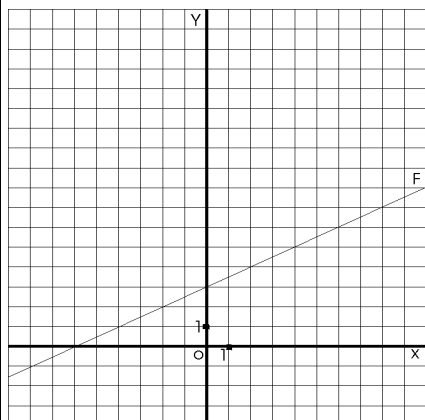
S =

4.
$$\begin{cases} y = -\frac{8}{x} \\ y = -0,5x + 1 \end{cases}$$



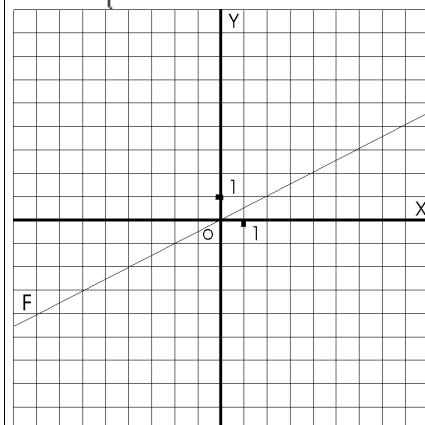
S =

5. $0,2x^2 = \frac{x}{2} + 3$



S =

6.
$$\begin{cases} y = \frac{4}{x} \\ y = -0,5x \end{cases}$$



S =